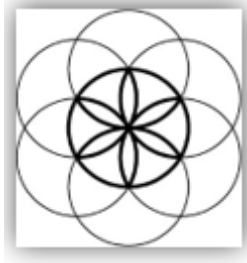


Pulsed Frequency™



MR72 Basic Software Download, Installation and User Guide

Contents

Account Registration.....	3
Create an Account.....	4
Download the Software	6
Chrome.....	7
Firefox	8
Internet Explorer	10
Install the Software	12
Just Feel Better!	17
Connect MR72 to Your Computer.....	19
When the Software is Run	21
Load a Program into the MR72	23
Troubleshooting.....	24
MR72 Manual Detection.....	27

Account Registration

To download the Pulsed Frequency software, please go to www.pulsedfrequency.com.



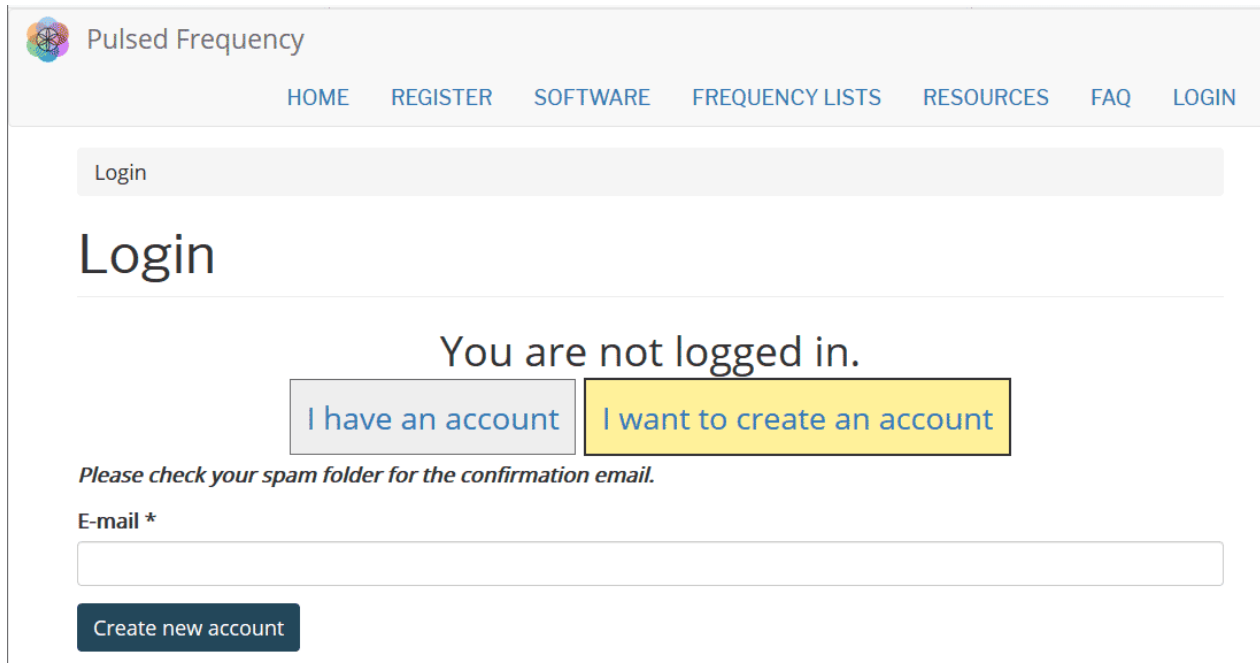
Click where the arrow is pointing. You will be taken to a Login screen.

The screenshot shows the Pulsed Frequency website login screen. At the top is a navigation bar with links: HOME, REGISTER, SOFTWARE, FREQUENCY LISTS, RESOURCES, FAQ, and LOGIN. Below the navigation bar is a section titled "Login". Under the title, it says "You are not logged in." Below this, there are two buttons: "I have an account" (highlighted in yellow) and "I want to create an account". Below these buttons are two input fields: "E-mail *" and "Password *". Below the "E-mail *" field is a link that says "Request new password". At the bottom of the form is a button that says "Log in" with a small icon of a person.

If you already have an account, click **I have an account**. Enter your email address and password and then click **Log in**.

Create an Account

If you do not have an account, select **I want to create an account**.

 Pulsed Frequency

HOME REGISTER SOFTWARE FREQUENCY LISTS RESOURCES FAQ LOGIN

Login

Login

You are not logged in.

I have an account

I want to create an account

Please check your spam folder for the confirmation email.

E-mail *

Create new account

Enter your email address, then click **Create new account**. Further instructions will then be sent to your email address. The confirmation email will look something like this.

From: support@pulsedfrequency.com
To: rod@server.com
Cc:
Subject: Account details for rod_564 at Pulsed Frequency

Dear Registered User,

Thank you for registering at Pulsed Frequency. You may now log in by clicking this link or copying and pasting it to your browser:

<https://pulsedfrequency.com/user/reset/564/1534971011/JKZCwxsqdPQhoLdXsoli2wnP8Z554uiCxLi-LJuTjH0>

This link can only be used once to log in and will lead you to a page where you can set your password.

After setting your password, you will be able to log in at <https://pulsedfrequency.com/user> in the future using:

username: rod@server.com
password: Your password

-- Pulsed Frequency team

Click on the link in the email and you will be taken back to the website to reset your password.

You have just used your one-time login link. It is no longer necessary to use this link to log in. Please change your password. ×

View

Edit

Orders

E-mail address *

rod@server.com

Password

Confirm password

Email updates

☒ Subscribe

Locale settings

Time zone

America/New York: Wednesday, August 22, 2018 - 5:06pm -0400

✓ Save

Enter a New password in both fields.

You have just used your one-time login link. It is no longer necessary to use this link to log in. Please change your password. ×

View

Edit

Orders

E-mail address *

rod@server.com

Password

●●●●●●●● ✓

Confirm password

●●●●●●●● ✓

Email updates

☒ Subscribe

Locale settings

Time zone

America/New York: Wednesday, August 22, 2018 - 5:06pm -0400

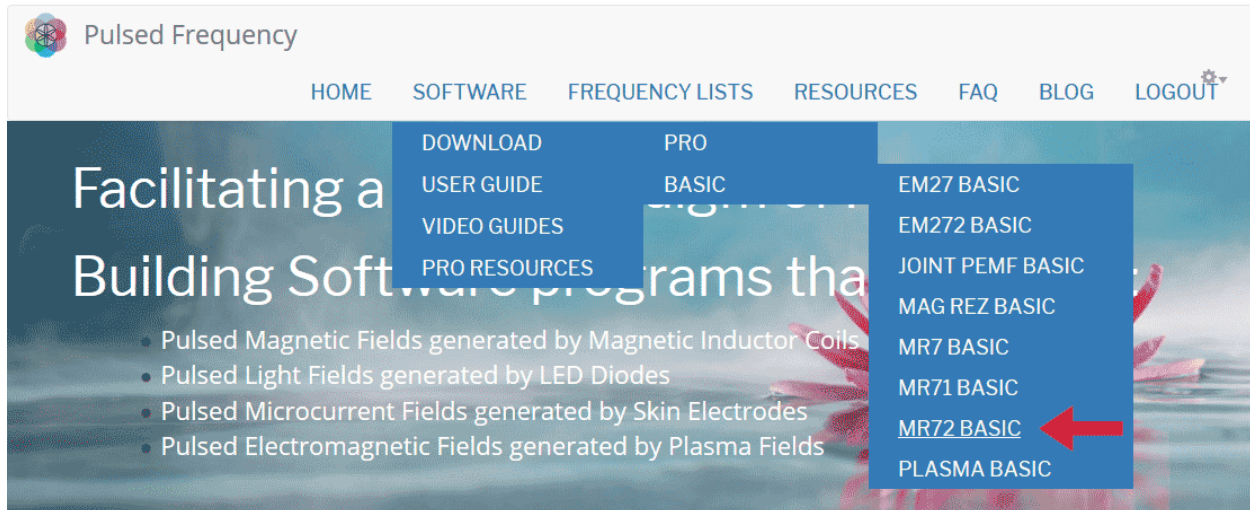
✓ Save

After you have changed your password, click the **Save** button. You will be told that the changes have been saved.

5

Download the Software

If you aren't already logged in, log into your account, then click the Software menu item.



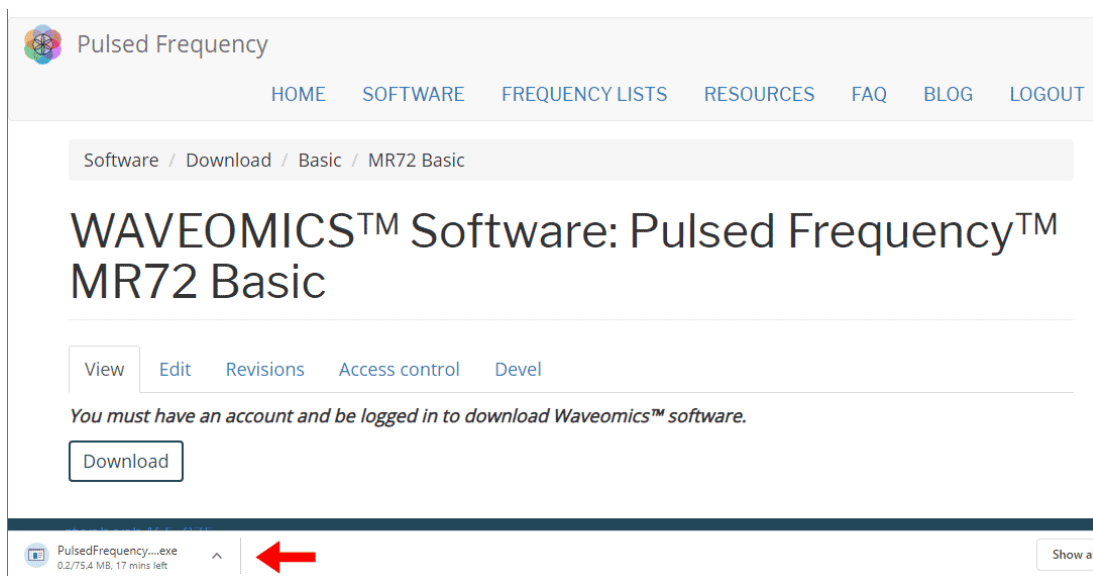
Point to **Download**, point to **Basic**, then click **MR72 Basic**. When you do this, you will be taken to the following page.



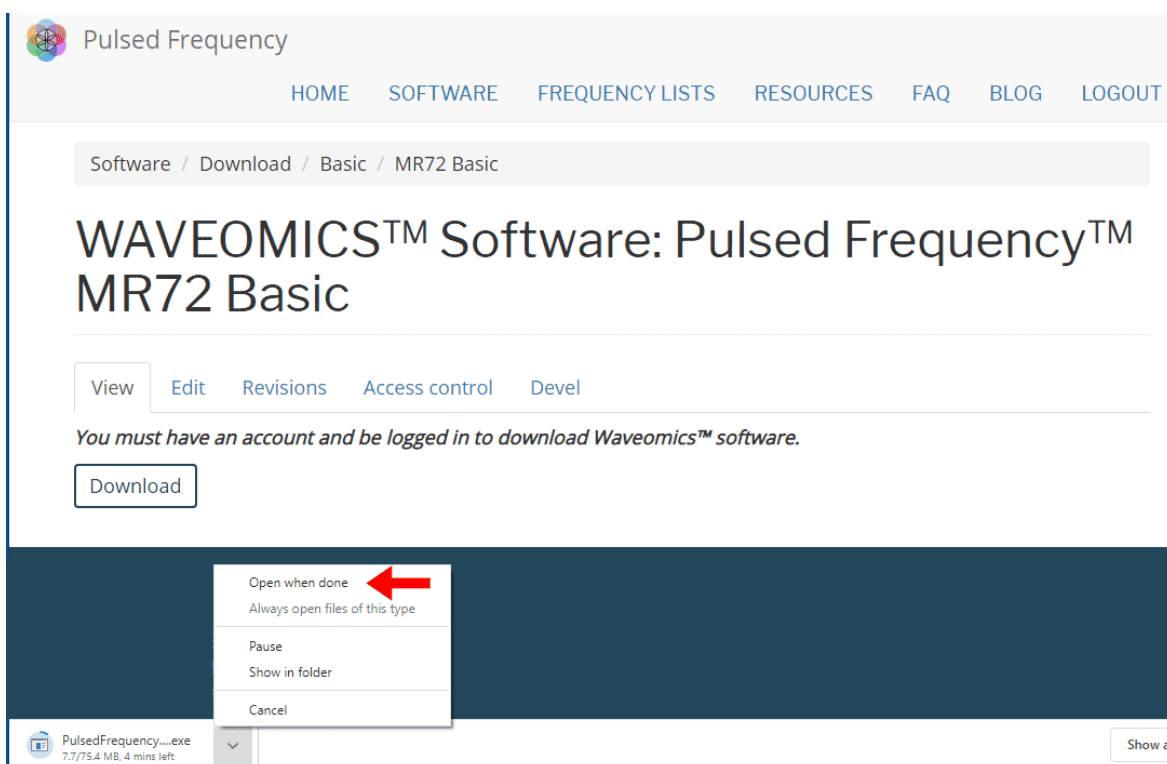
Click the **Download** button.

What happens next depends on the web browser you are using. Here are instructions specific to three different browsers being used today.

Chrome



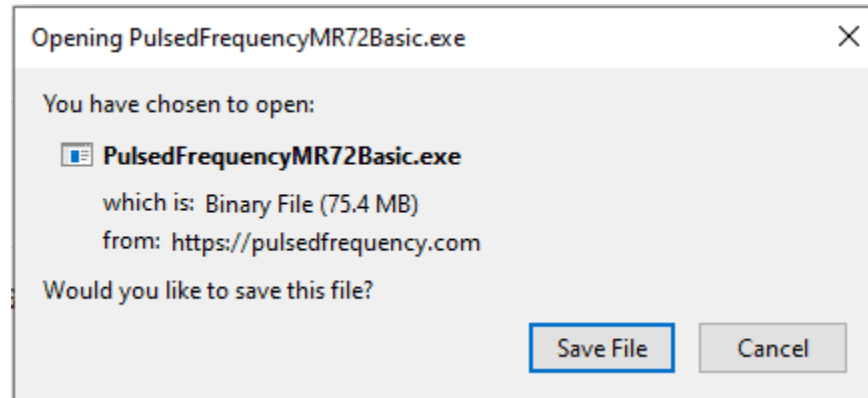
When you click the **Download** button, a notification displays in the lower left-hand corner of the browser that alerts you to the file being downloaded. You will see the number of bytes that have been downloaded and the total size of the file.



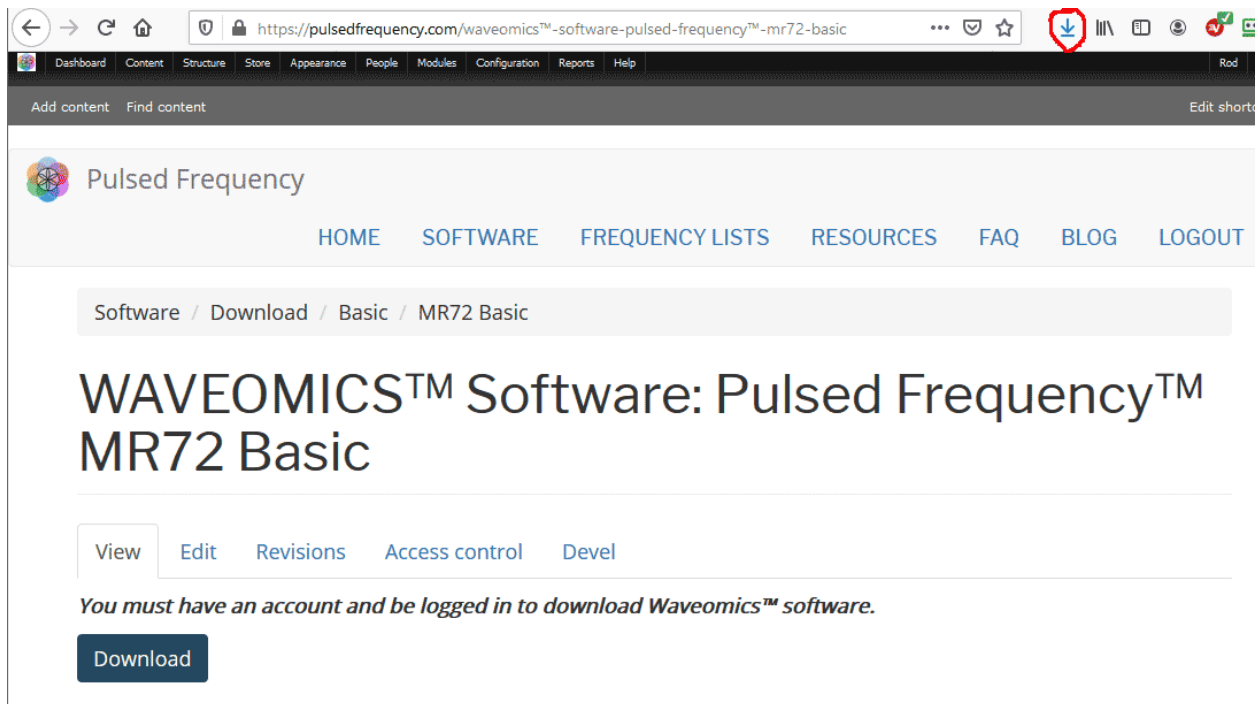
When the file download has completed, click the down arrow and then click **Open**. This will run the installation program for the **MR72 Basic** software.

Firefox

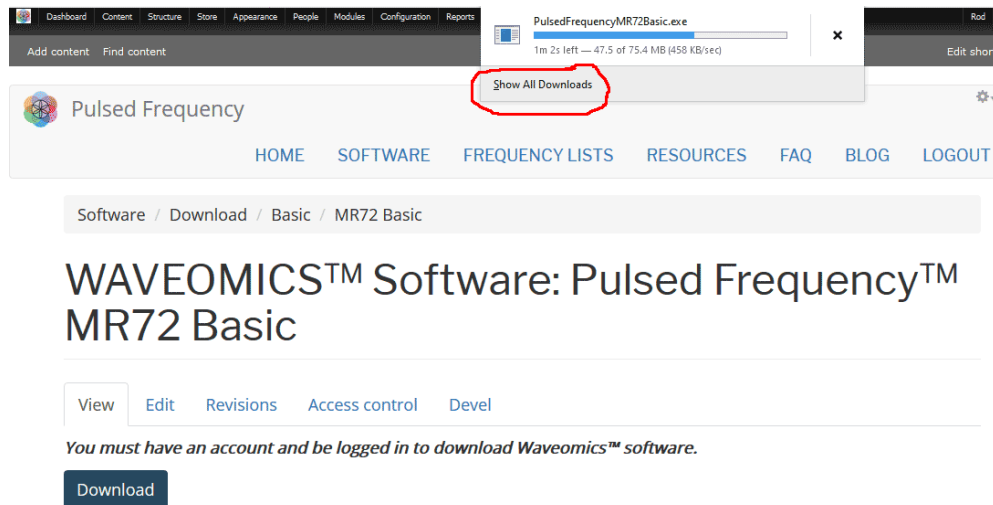
When you click the **Download** button and the following dialog box will pop up.



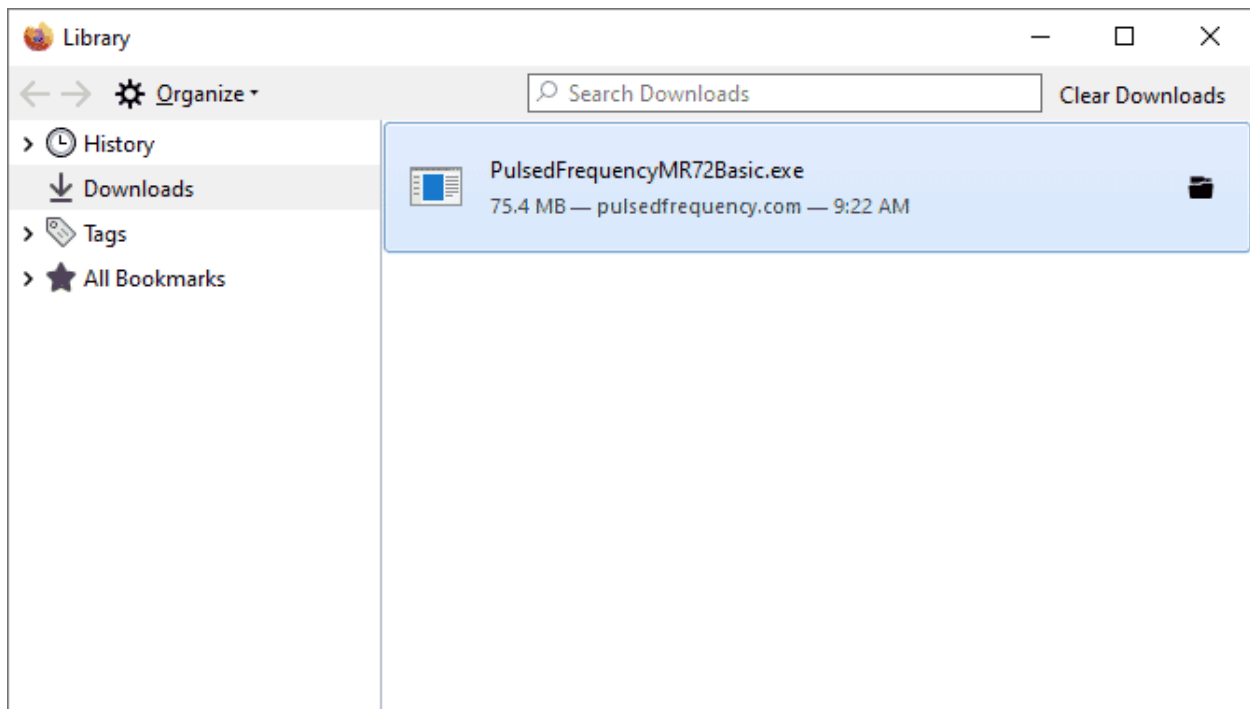
In this dialog box, click the **Save File** button.



Next, go to the upper right-hand corner of the browser and click the **Down Arrow**.



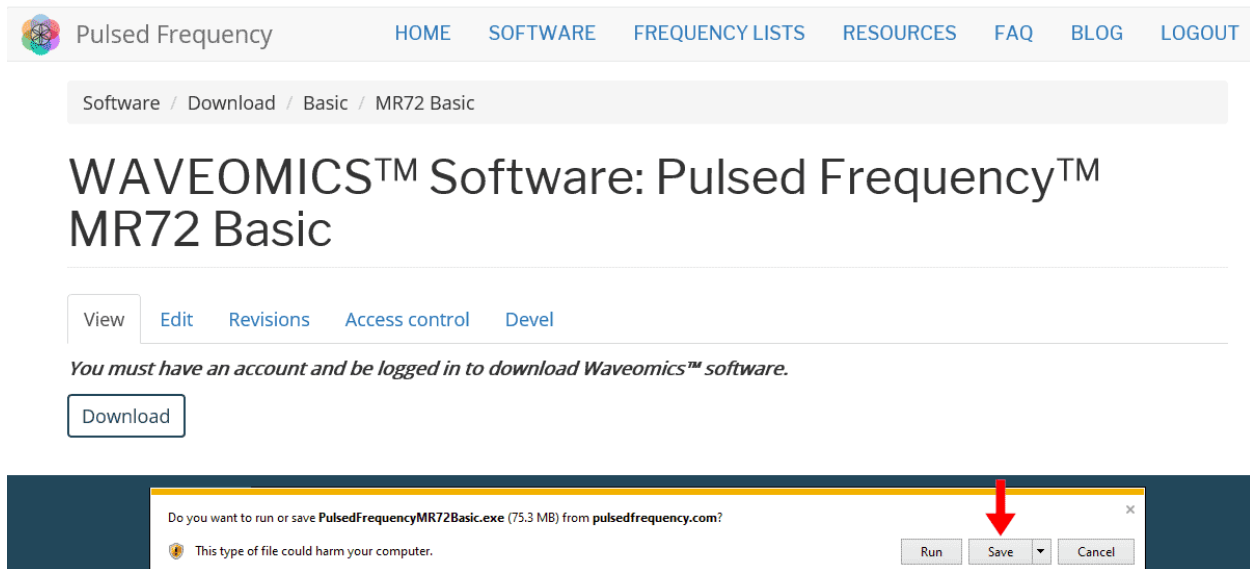
A small window will appear. Click the link in the lower left that says, **Show All Downloads**.



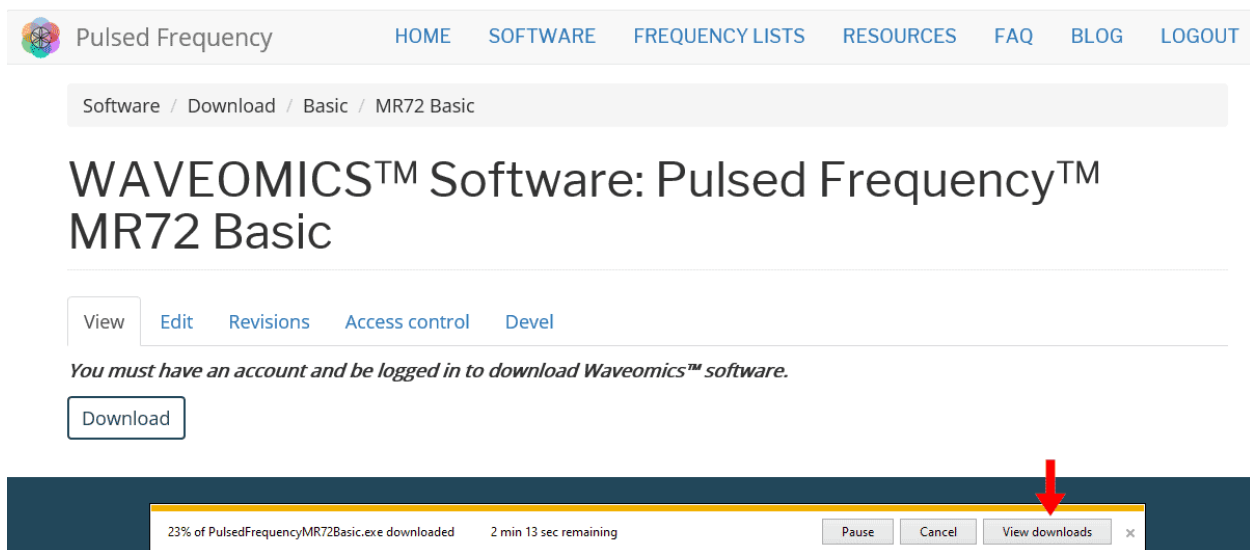
When the download has completed, the progress bar will disappear and you will see what is shown above. Double-click on the **PulsedFrequencyMR72Basic.exe** file and the installation of the **MR72 Basic** software will begin.

Internet Explorer

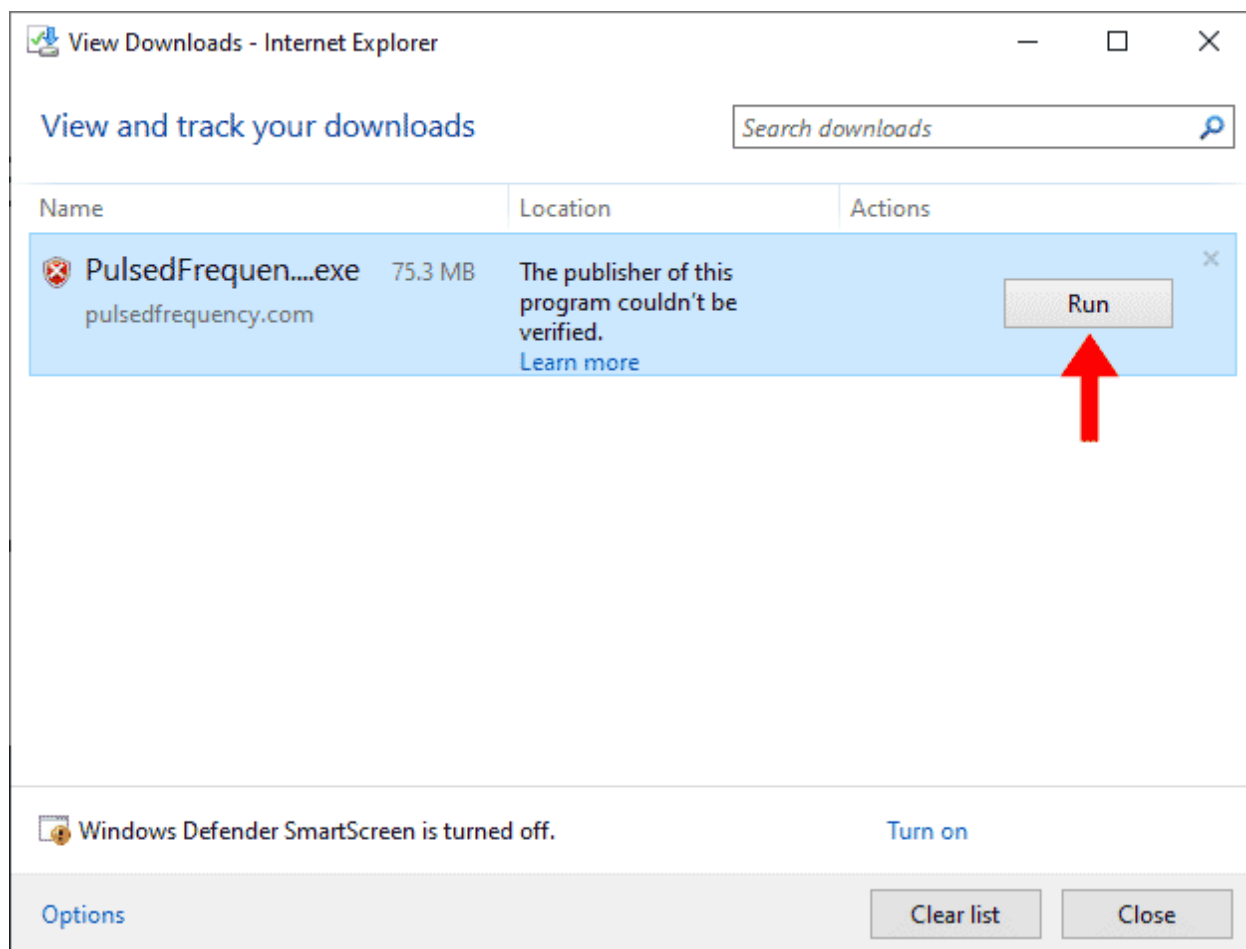
When you click the **Download** button, a small rectangular window will display at the bottom of the screen.



This window will show the progress of the file being downloaded. Click the **Save** button.



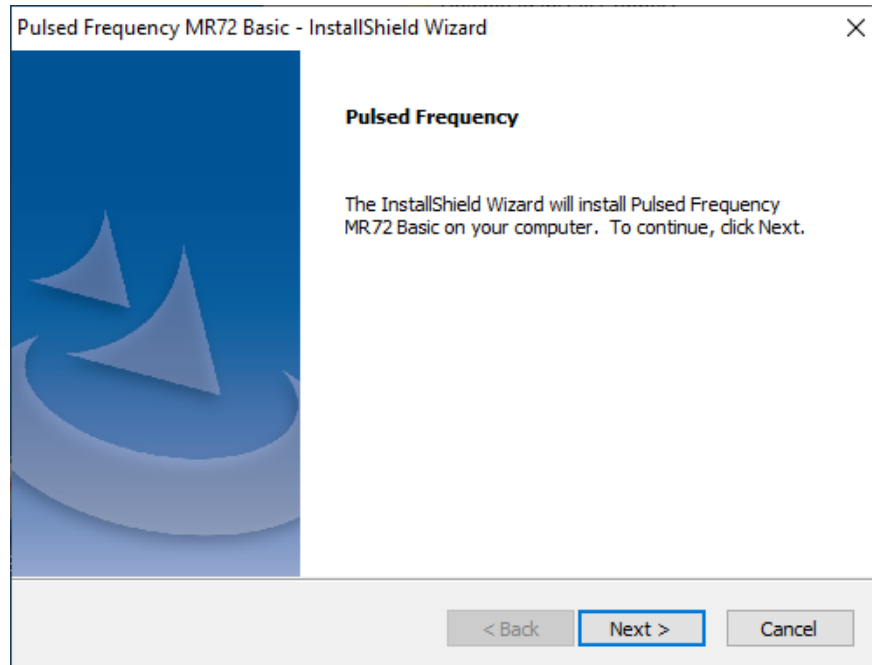
When file download has completed, click the **View Downloads** button.



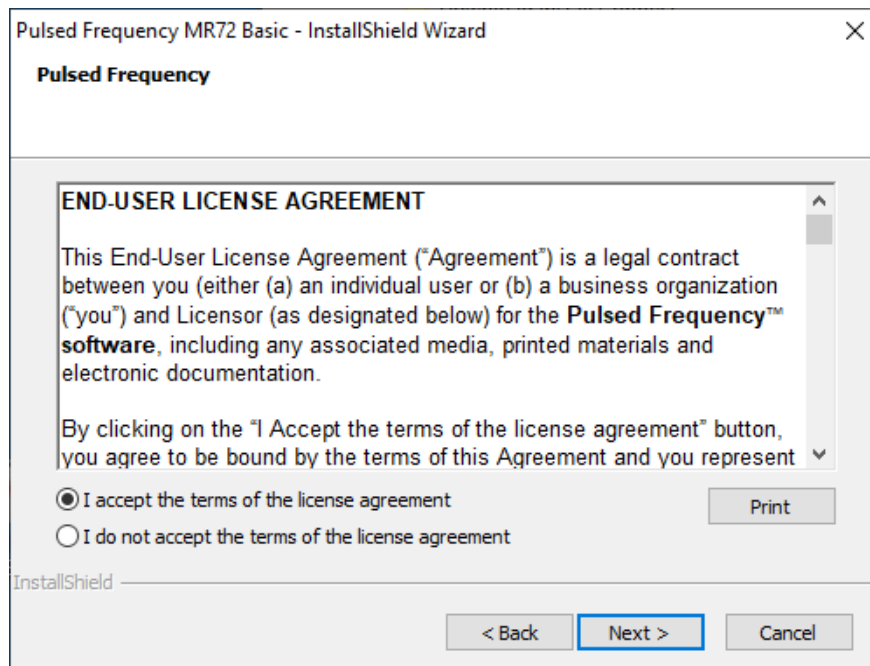
In this dialog box, click the **Run** button to run the **PulsedFrequencyMR72Basic.exe** installation program.

Install the Software

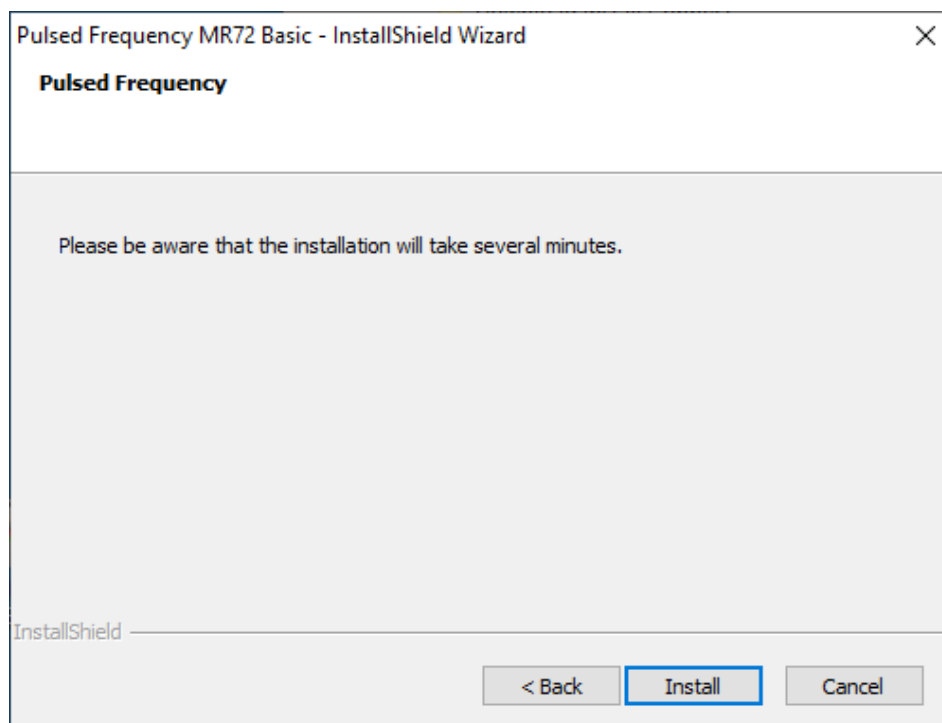
To install the MR72 Basic software, double-click on the downloaded file.



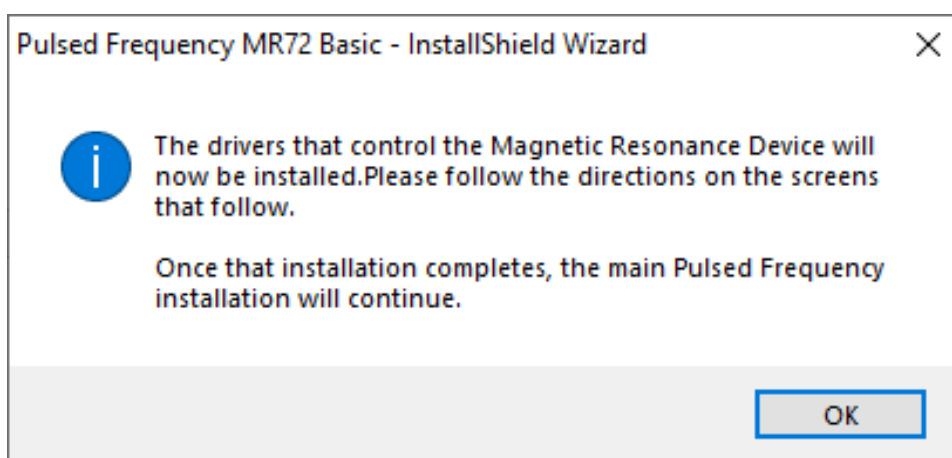
On this Welcome screen, click the **Next** button.



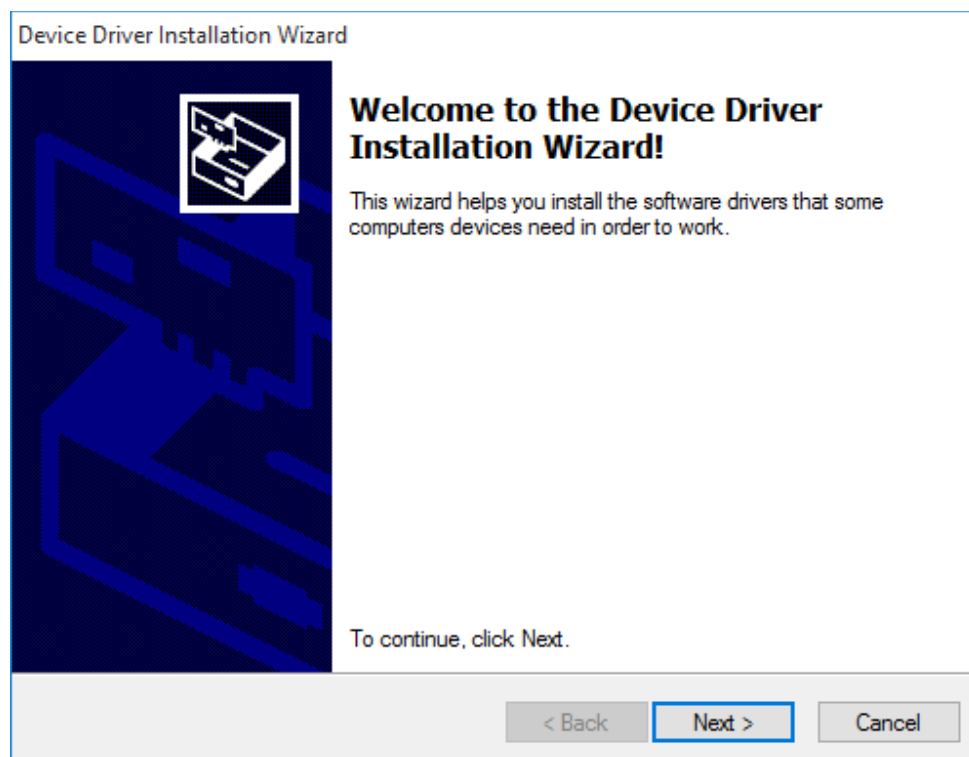
Click **I accept the terms of the license agreement**, then click the **Next** button.



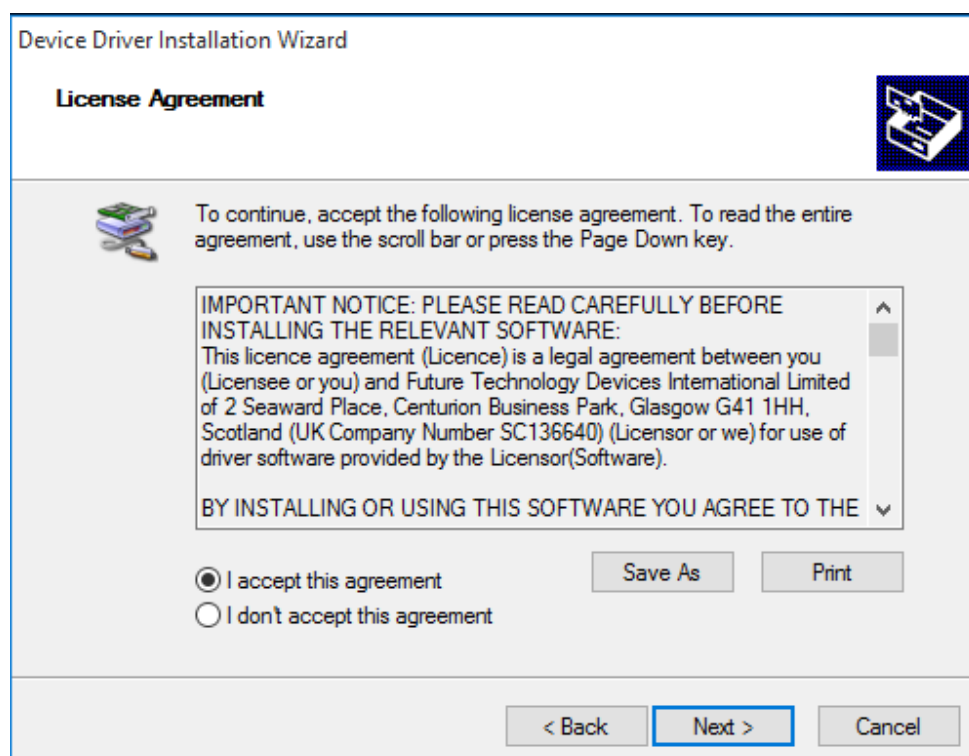
To begin the software installation, click the **Install** button.



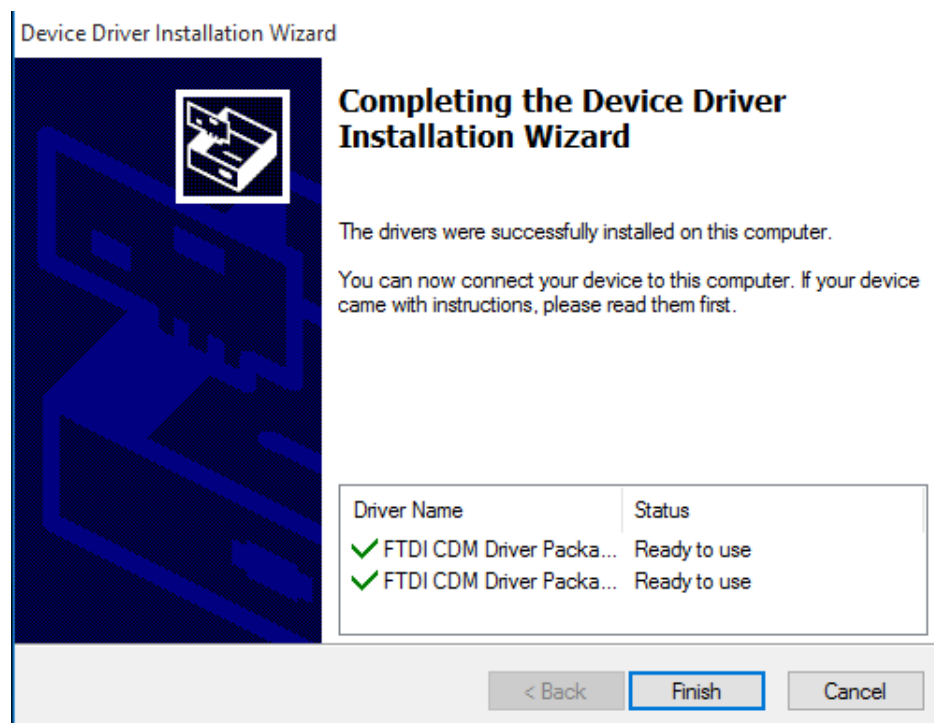
At this point, this dialog box will appear and inform you that the drivers needed for your MR72 device will now be installed. Click the **OK** button to begin.



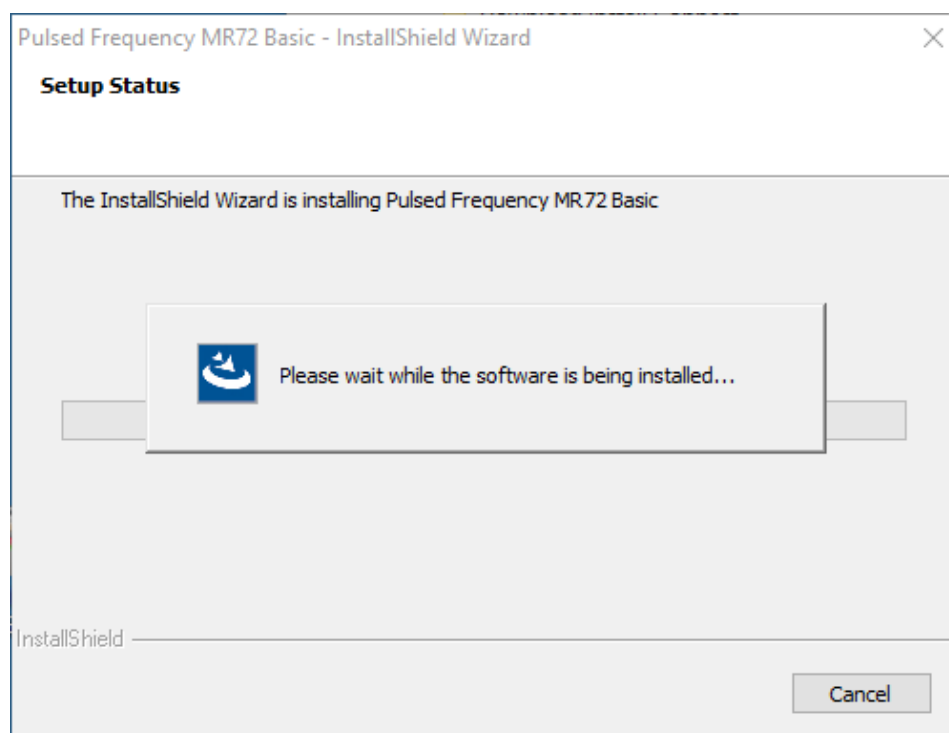
On this screen click the **Next** button.



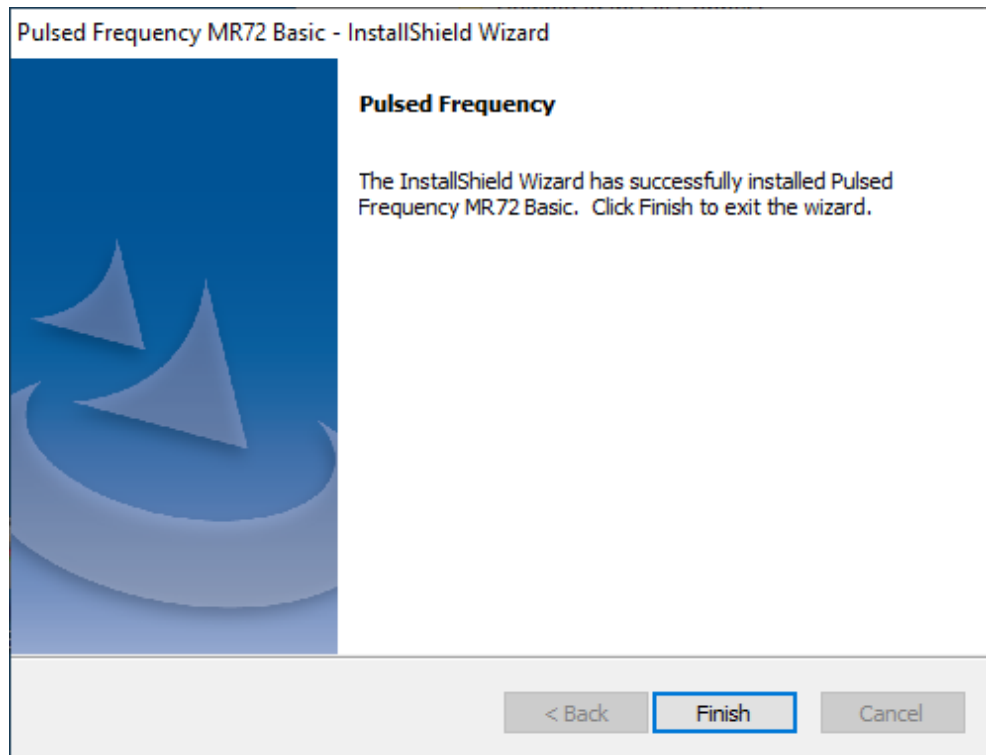
Accept the license agreement, then click the **Next** button.



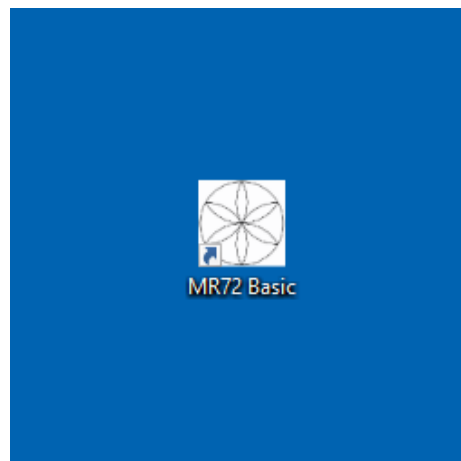
Click the **Finish** button to complete the driver installation.



At this point, the MR72 Basic software will be installed. Just wait until it has completed.



When you see this screen, the installation is complete. Click the **Finish** button.



During installation, a shortcut to the MR72 Basic software was placed on your desktop. Double-click this shortcut to run the software.

Just Feel Better!

MR72 LED and Magnetic Pulsed Frequency Generator

The following steps are instructions for the MR72 Pulsed Frequency Generator. The device comes with a Frequency generator box, 2 LED pulsing light disks and/or 2 pulsing magnetic disks, and a 110 volt charger / power cord.

Setting up the MR72 Device

Insert the charger cable into the round port to the left of the On/Off button and the other end into a 110 volt electrical outlet. This will charge the device. A full charge will take approximately 4-8 hours. The light surrounding the On/Off button will flash Red/ Green when the charge is complete. The MR72 will run when the charger is connected or disconnected from the device. The MR72 device will run approximately 10 hours on battery power once charged.



To turn the MR72 device ON, Push the large On/Off button in the middle, until the lighted ring turns green. This ring will stay green while the programs are running. The Green On/Off light will turn Flashing Red when the device needs a charge. To turn the MR72 device OFF, press and hold the On/Off button for about two seconds. The device will beep and turn off. If running programs when the charger is plugged in, the green light will flash.



The MR72 offers the option of using Magnetic disks or LED light disks. If using the magnetic disks, it is suggested that you face the flower label side away from the body, so that you can see the flashing green lights on the flower. The magnetic pulses will go through clothing, so there is no need to have them against the skin. unlike the LED lights.



The Magnetic disks or the LED disks plug into the RJ45 jacks on the back side of the MR72. Do not wrap the disc cables or Power cable around the MR72 device. Instead, unplug them and wrap each cable individually.



If using the two red LED light disks, plug them into the RJ45 plug jacks on the bottom of the MR72. When using the LED lights, the lights **MUST** face the skin. The lights will not penetrate through cloth. The LED lights will feel warm. The lights need to breathe. Do not sandwich them between you and furniture. If the LED lights get too warm for your skin, move to another position. LEDs can be held against the skin with a brace, sock or ace bandage.



The MR72 device has the ability to be reprogrammed. To the right of the On/Off switch, there is a mini USB port. You will need to use a USB/ Mini USB cable to connect the unit to your computer if you want to transfer programs. Programs and the appropriate software can be obtained from www.Pulsedfrequency.com.



You may find it convenient to use the LEDs against your body during the day, then use the Magnetic disk under your fitted sheet at night, so that you can sleep on top of them. This regimen will maximize the treatment effect. You may also tuck the MR72 device and the two magnetic disks into a brace around a knee or other joint.

MR72: Useful Tips

It's very important to drink a minimum of 32 ounces of purified water before a treatment, and another 32 ounces of purified water after the treatment. The water helps the frequencies flow through the body and cleans out the debris that the cells are casting off.

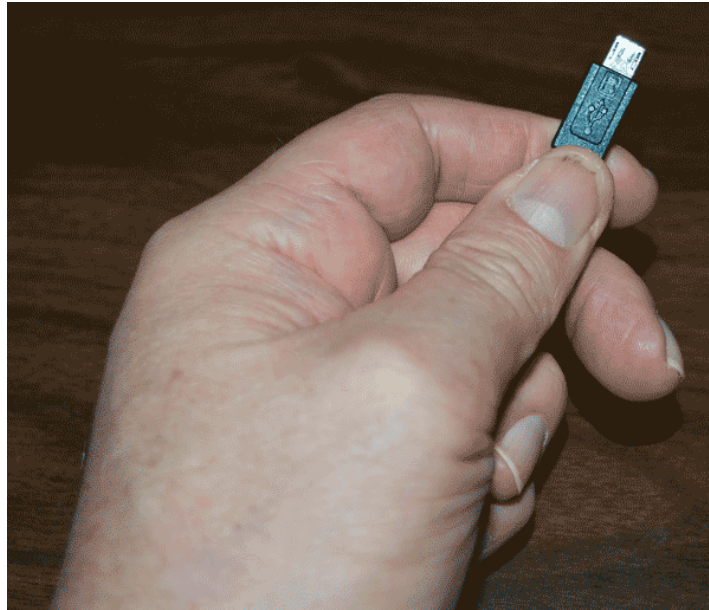


You may experience a slight dizziness or detoxing flu-like effects from this treatment. If this happens, reduce the treatment time. Slowly increase daily treatment time until all programs are run and the unit shuts off. Also increase your water intake until symptoms subside.

It is suggested not to use electronic devices while being treated, such as computers, cell phones, I-pads and Kindles. Electronic devices may not work within the electro-magnetic field. This caveat does not apply to LED Lights.

Disclaimer: The MR72 device does not claim to treat or correct any medical diseases, injuries or symptoms. The MR72 device is considered to be a Wellness device.

Connect MR72 to Your Computer



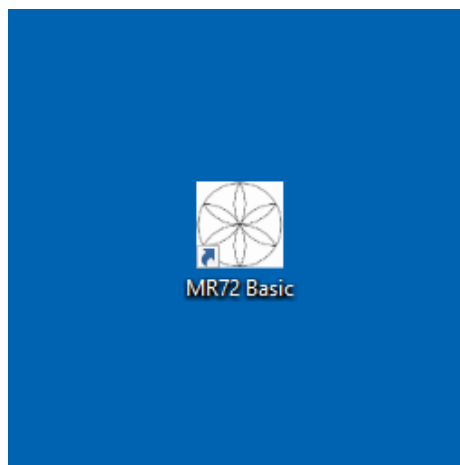
To connect the MR72 to the computer, take the supplied Mini-USB cable and orient the smaller end so that it can be plugged into the device.



Make sure the MR72 is OFF and plug the Mini-USB cable into the mini-USB jack in the unit. The MR72 is OFF if the green LED ring light is not lit.



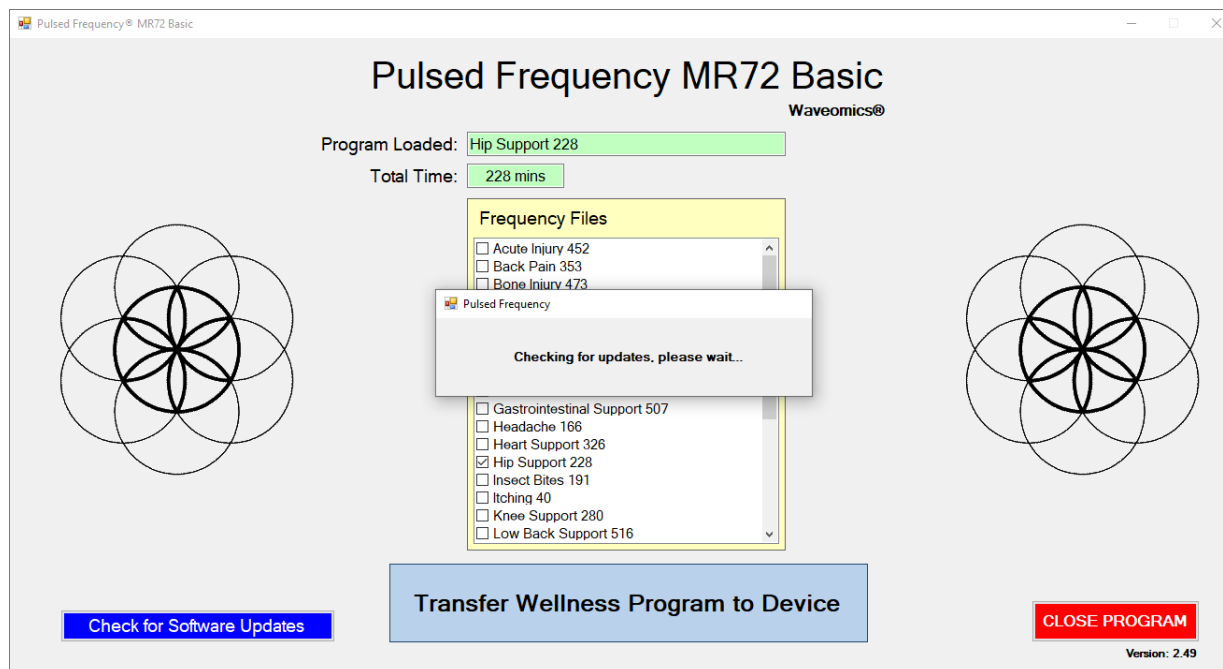
Plug the larger end of the USB cable into your computer.



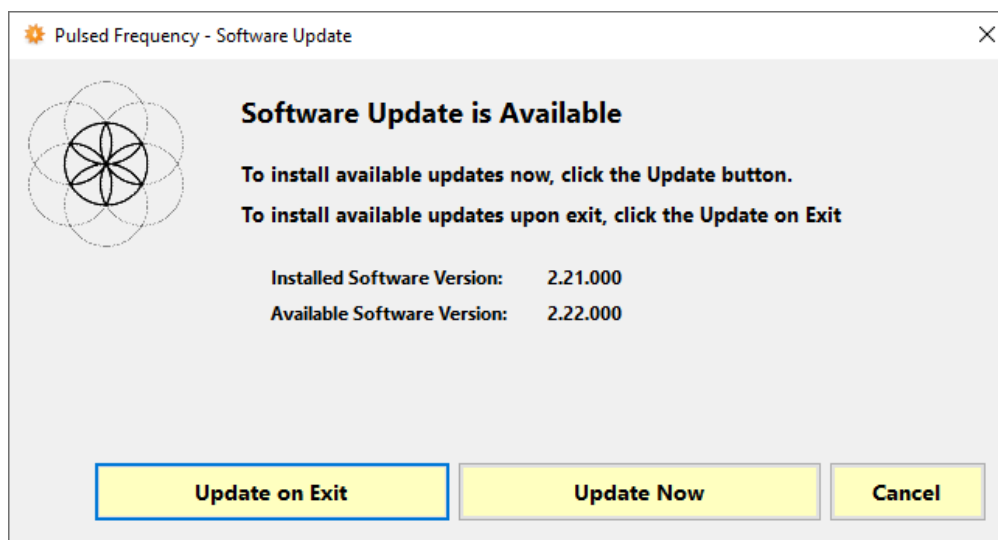
To run the MR72 Basic software, double-click the **MR72** Basic shortcut on the desktop.

When the Software is Run

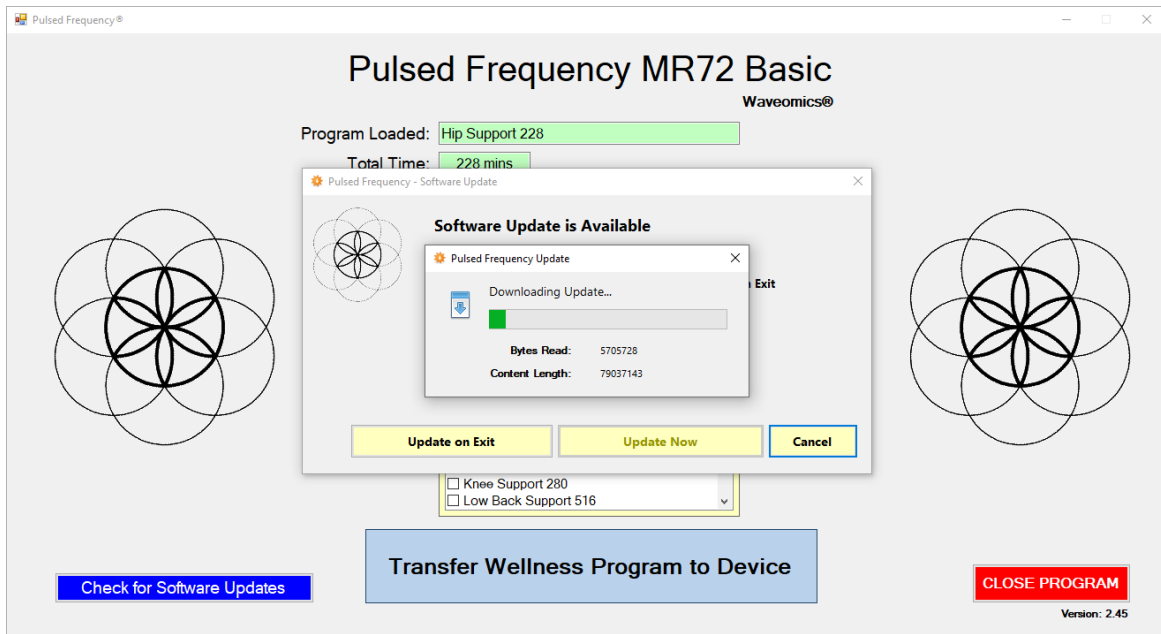
When you run the software, it will first check to see if a software update is available.



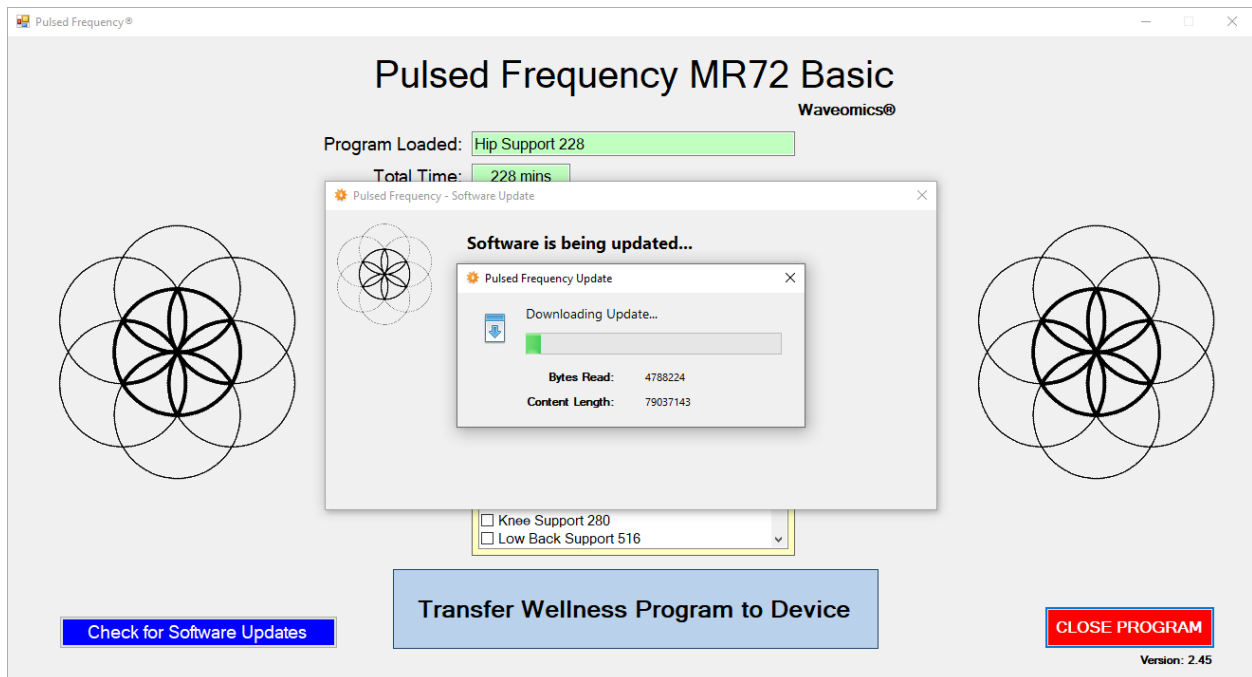
During this process, a small dialog box will display. If no update is available, the dialog will just go away.



If an update is available, the above dialog box will appear. If you click **Update on Exit**, this box will disappear and you will be back at the main page. The software will then be updated when you click the **Close Program** button. If you click **Update Now**, the software will be updated immediately. If you click **Cancel**, no update will be performed.



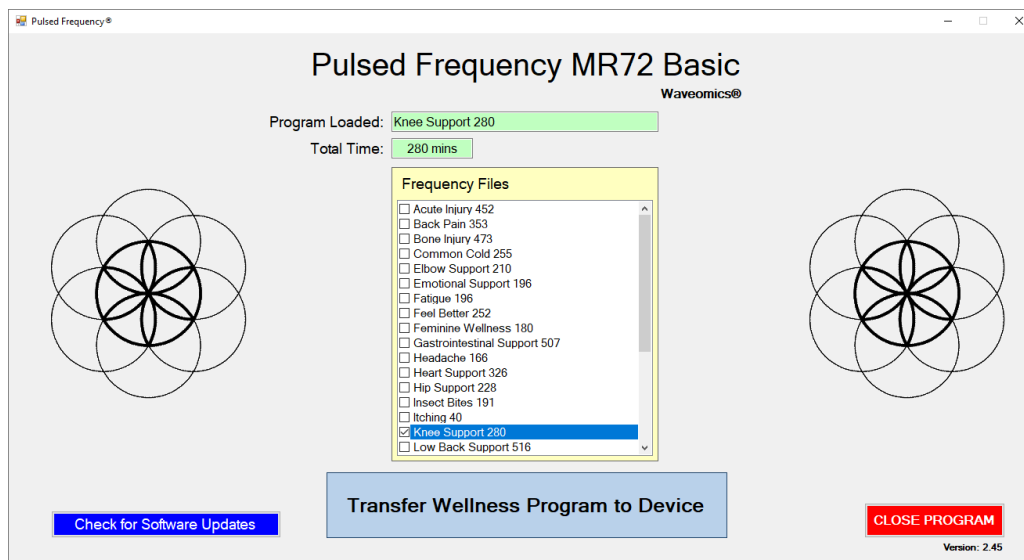
If you clicked **Update Now**, a progress bar will be displayed as the software is being downloaded.



If you clicked **Update on Exit**, the above dialog box will be displayed and the update downloaded when you click the **Close Program** button.

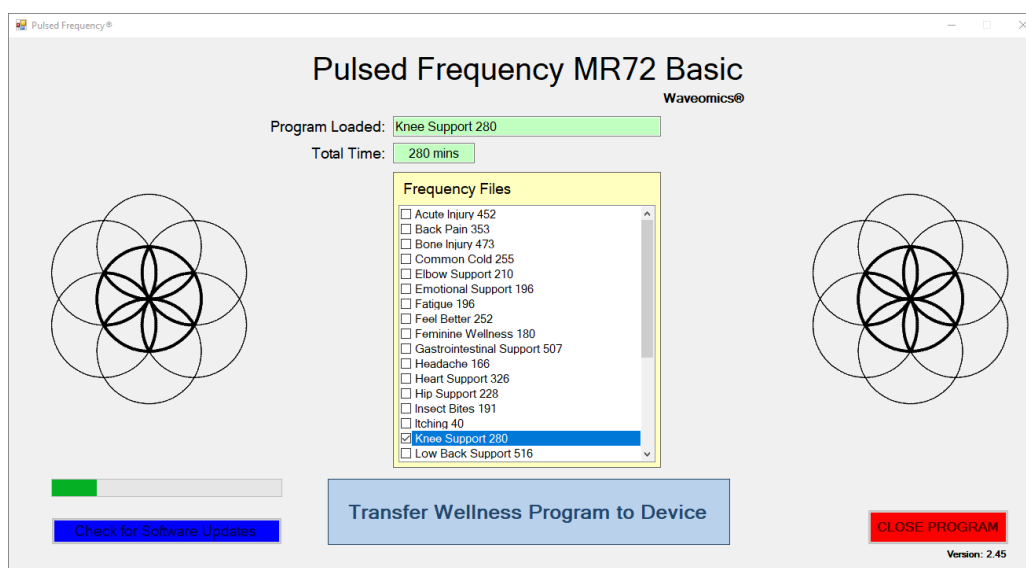
Load a Program into the MR72

Before running the MR72 Basic software, make sure your MR72 is connected to the computer.



The MR72 Basic software is very easy to use. Select one of the available Wellness programs from the list. When you do this, the program name and amount of time it runs for will be displayed at the top.

When you are ready, click the **Transfer Treatment to Device** button. The Wellness program will then be transferred to the MR72.



As the program is being transferred, you will see a progress bar in the lower left hand corner. After the transfer has finished, the MR72 will be ready to use.

Troubleshooting

If you have problems detecting your MR72 device, you will need to troubleshoot the problem. To do this, exit from the software and try the following solutions.

Solution 1

If the MR72 is turned on when you connect it to the computer and run the software, you won't be able to do anything. The normal procedure is to turn the MR72 off, connect it to the computer, then run the software. If you do that, everything will work properly.

Solution 2

Even though you have the USB cable plugged into the MR72 and to the computer, you may not have a good connection. Unplug the cable from both the MR72 and the computer, then plug the cable back into both places. Next, run the software, click View Frequency Files in Device, and see if the words, "MR72 is not connected" still appear on the screen. If they don't, your problem is solved. You can now proceed to the Software User Guide section. If you still see the words, proceed to Solution 2.

Solution 3

The most common cause of a connection problem is that Windows cannot see your device. Try plugging the USB cable into a different USB port on your computer. Also, unplug the cable from your MR72 and plug it back in. Run the software again, click View Frequency Files in Device and see if you can see the files loaded into your MR72. If you can see the files, proceed to the Software User Guide section. If you still get the message, "MR72 is not connected", proceed to Solution 3.

Solution 4

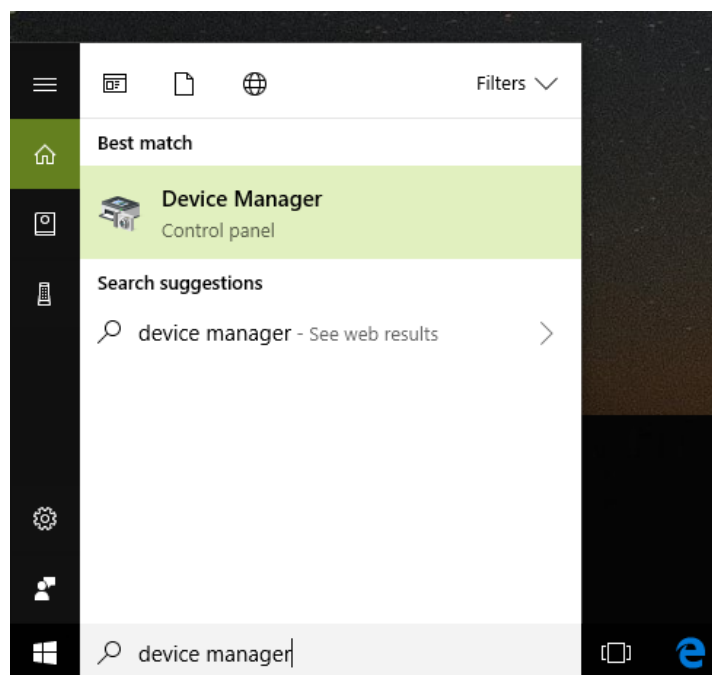
If you are still having a problem, try plugging the larger end of the USB cable into a USB hub. The hub must be powered for this to work. A powered USB hub is where a power cable runs from the hub to an AC adapter that plugs into a wall outlet. With the MR72 plugged into the hub, run the software and try to load a treatment. If you can, your problem is solved.

Solution 5

Another cause of a connection problem is a bad USB cable. If you suspect your cable, then replace it and try again.

Solution 6

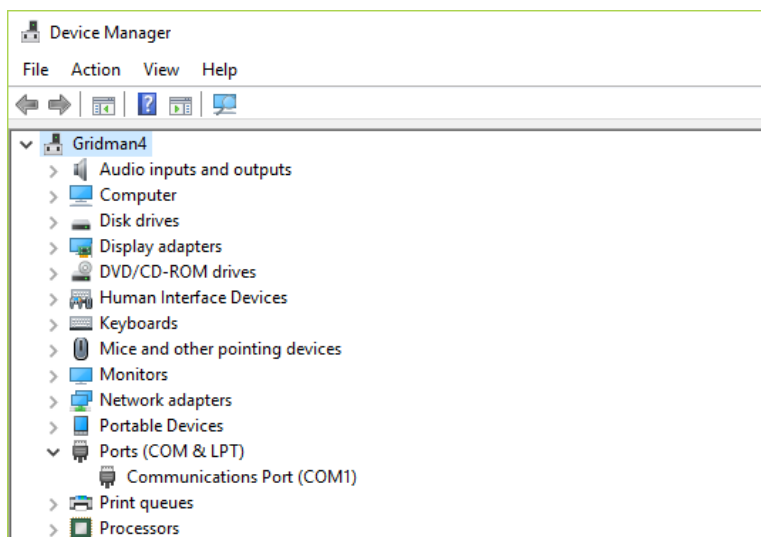
If all other solutions have failed, a final check is to run the Device Manager.



If you are using Windows 10, go to the lower left hand corner of the screen and enter the words "device manager". When that choice appears in the list, click on it.

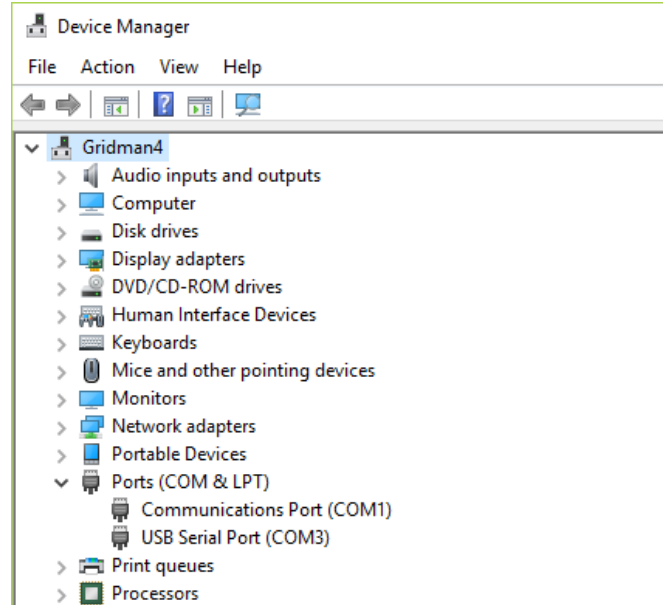
If you are using Windows 8 or 8.1, click the flag in the lower left hand corner and type "device manager." When that choice appears in the list, click on it.

If you are on Windows 7, click the Start button in the lower left hand corner, and enter "device manger" in the search box. When that choice appears in the list, click on it.



In Device Manager, click the arrow next to Ports (COM & LPT) in order to expand the list. If the MR72 is connected and you see something similar to the screenshot above, then Windows

cannot see your device. Try any of the above solutions then come back to Device Manager and look at the list.



When Windows can see your MR72, you will see an entry similar to the one above that says, "USB Serial Port (COM3). It may show a different COM port, but that is okay. The main thing to remember is that when Windows can see your MR72, it will assign a COM port to it. You should now be able to run the software and transfer treatments to the MR72.

MR72 Manual Detection

Please follow these steps in order to manually detect your MR72.

On Windows 10, click the Windows flag in the lower left corner of the screen and scroll down the list of programs until you see the Pulsed Frequency folder. Expand that folder and select **Detect MR72**.

On Windows 8 or 8.1, click the Windows flag in the lower left corner of the screen, type "detect MR72" and when that item is displayed in the list on the right, select it to run the utility.

On Windows 7, go to the Start Menu, click All Programs, scroll down to the Pulsed Frequency folder and select the **Detect MR72** program. Make sure your MR72 is not connected to the computer when you do this.

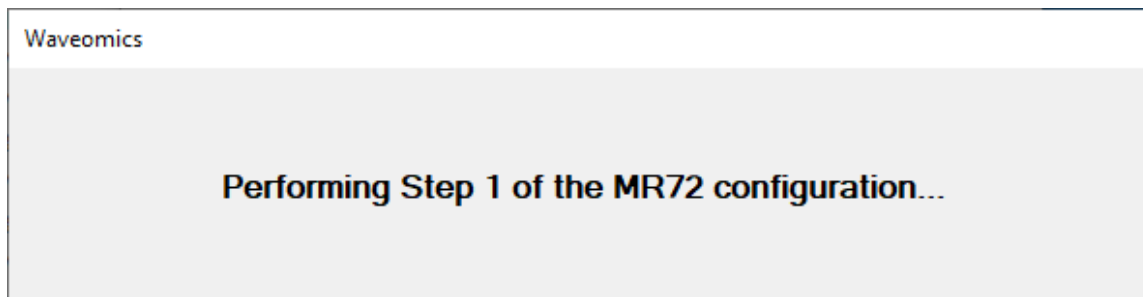
After you have clicked on the shortcut, you will get a warning from Windows saying "Do you want to allow this app from an unknown publisher to make changes to your device?" Click "Yes". Follow the instructions on the screen to detect your device.



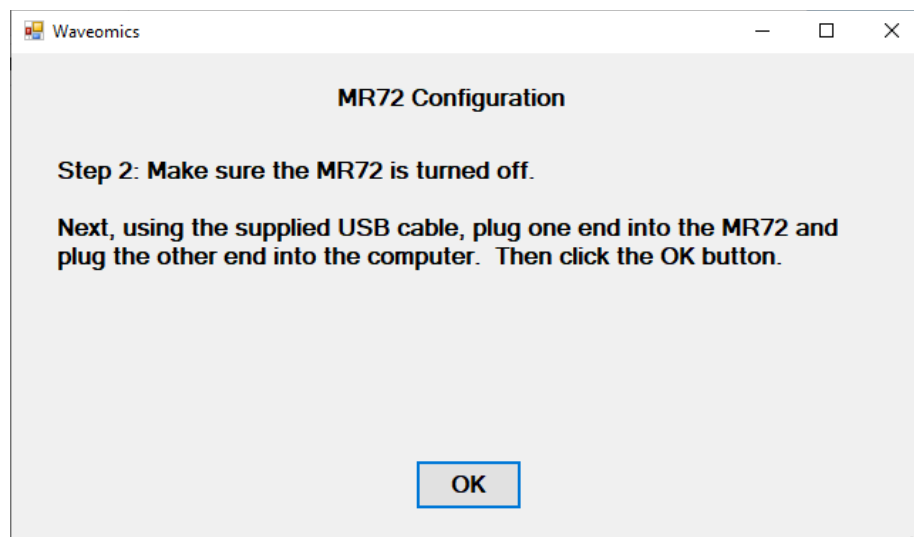
On the first page of the utility program, click the Detect Device button. The following dialog box will then be displayed.



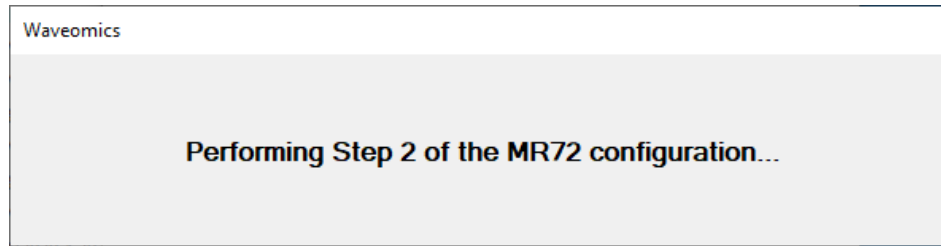
Make sure the MR72 is not connected to the computer, then click the **OK** button.



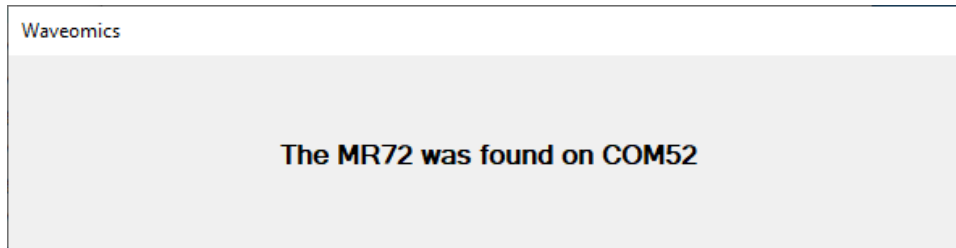
Here, the program is looking at your system without the MR72 connected. After it is finished, the following dialog box will be displayed.



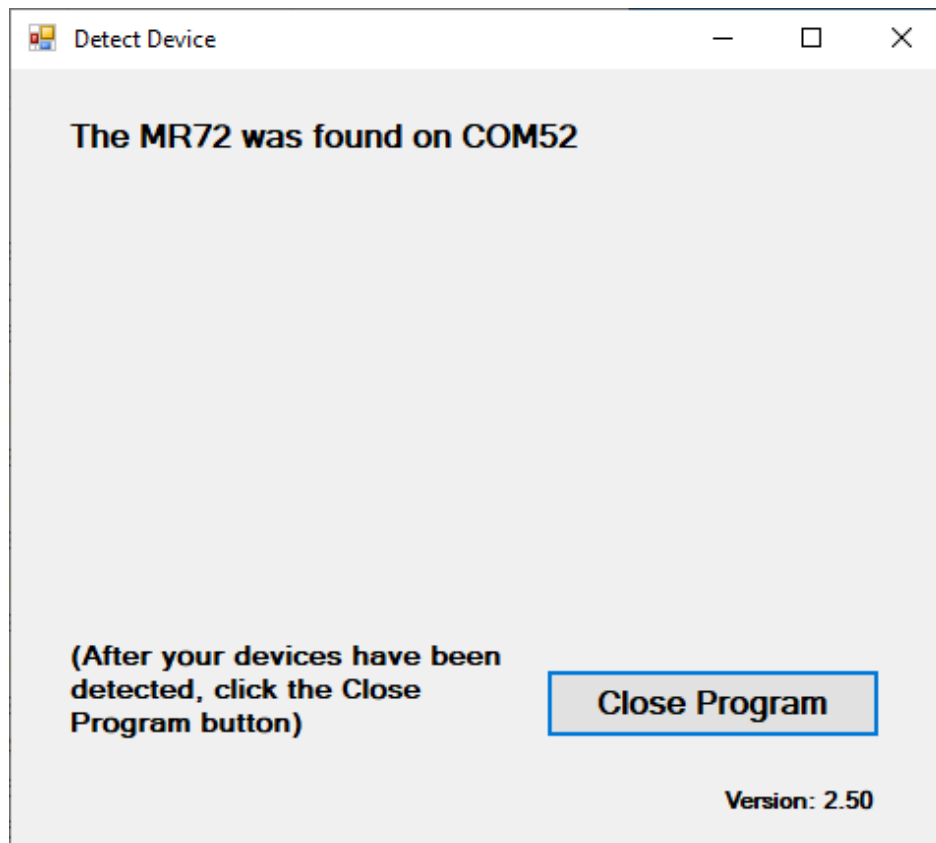
Make sure the MR72 is turned off, connect it to the computer, then click the **OK** button.



Here, the utility program is looking at your system with the MR72 connected.



When it has detected your device, you will be returned to the main screen of the program.



The location of the MR72 will be displayed on the screen and saved in the configuration information for the Pulsed Frequency MR72 Basic software. You can now click the **Close Program** button to exit the program. This completes the manual detection process.

The Pulsed Frequency™ software can now be run with the MR72. Go to the desktop and double-click on the MR72 Basic shortcut.

